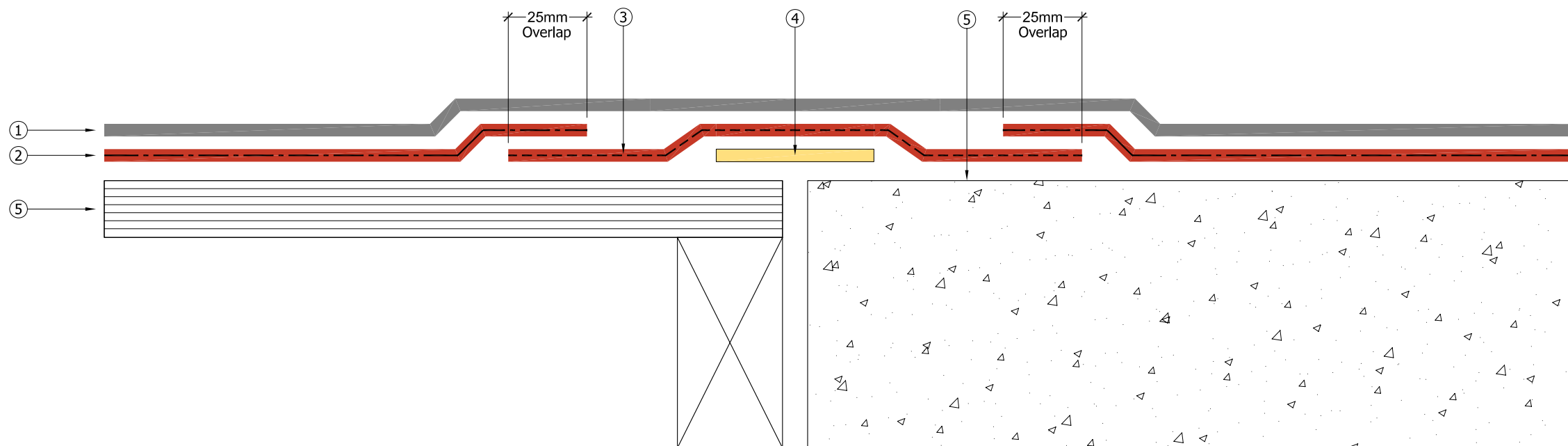
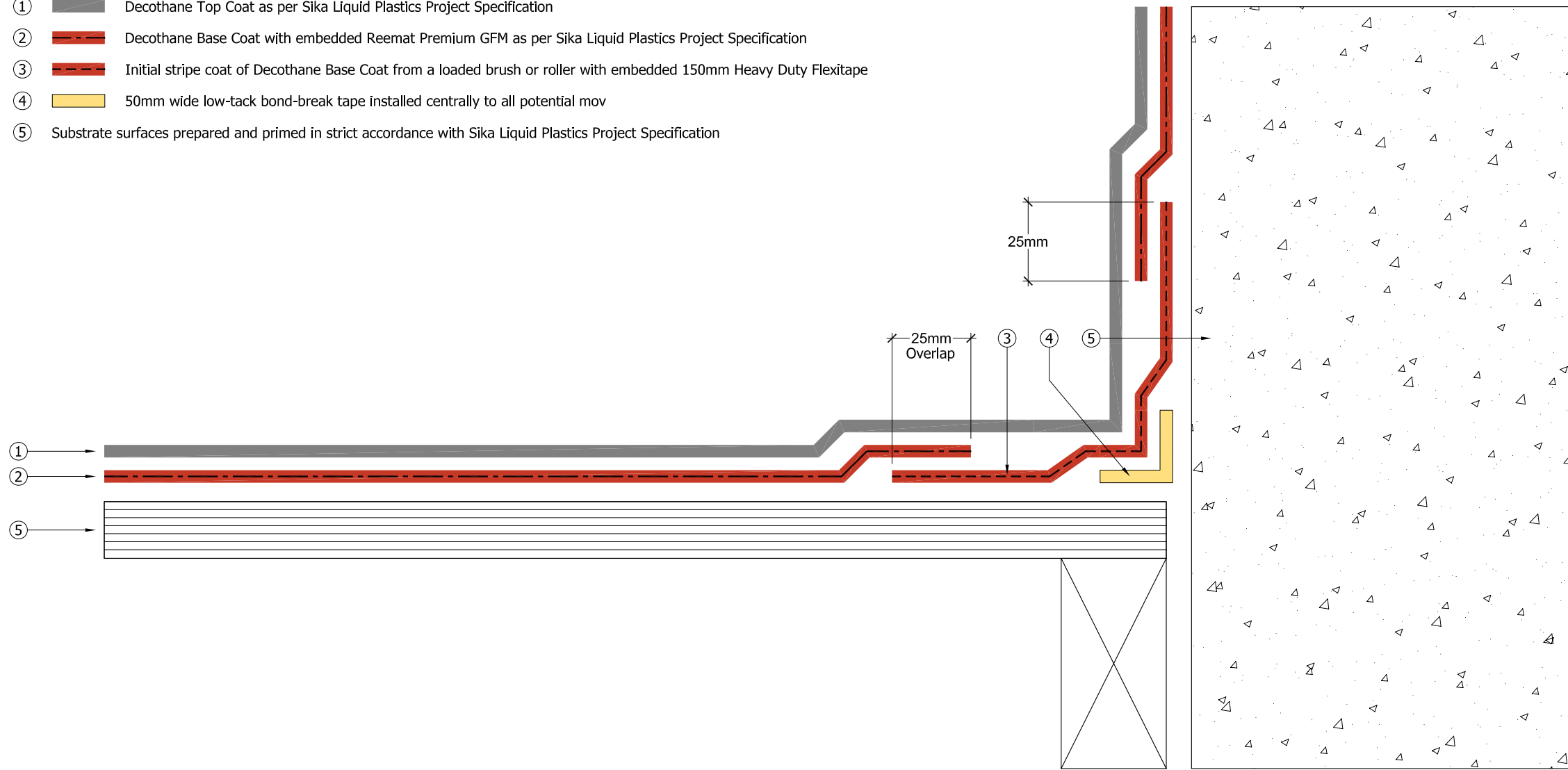


Key

- ① Decothane Top Coat as per Sika Liquid Plastics Project Specification
- ② Decothane Base Coat with embedded Reemat Premium GFM as per Sika Liquid Plastics Project Specification
- ③ Initial stripe coat of Decothane Base Coat from a loaded brush or roller with embedded 150mm Heavy Duty Flexitape
- ④ 50mm wide low-tack bond-break tape installed centrally to all potential mov
- ⑤ Substrate surfaces prepared and primed in strict accordance with Sika Liquid Plastics Project Specification



Sika Liquid Plastics
 Sika House
 Miller Street
 Preston
 Lancashire PR1 1EA
 Telephone: 01772 259781
 Email: technical.customer.services@uk.sika.com
 Web: www.liquidplastics.co.uk

This drawing is solely intended to illustrate the correct application of Sika Liquid Plastics products and systems, it must be read in conjunction with the appropriate specification and current issue of relevant Technical Data Sheets. All elements bearing reference to structural and/or thermal design are shown indicatively and should not be used in whole or in part for any aspect of project design without consulting the relevant authorities.

For refurbishment projects, all aspects of the existing roof are deemed to be fully compliant with BS 6229:2003 (Code of Practice for Flat Roofs with Continuously Supported Coverings) or improved upon for instances where these standards are not met.

Site-specific details not covered by our range of Standard Details can be obtained by providing relevant information to the email address shown.

Project N ^o	Revision
DWG N ^o	

Project:

Drawing Title:
 Waterproofing Application
 Bond Break Detail for differential
 movement within ±12.5mm

Scale: NTS @ A3 Drawn:

Date:

